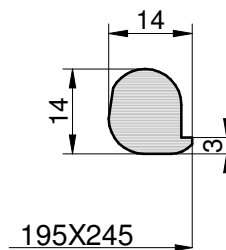


| STANDARD PARTS |             |                     |      |
|----------------|-------------|---------------------|------|
| Item           | Article No. | Designation         | Qty. |
| 1              | 7TA2500     | FRAME WITH SUPPORTS | 1    |
| 2              | 7CA2500     | COVER               | 1    |
| 3              | 9602...     | GASKET 295          | 1    |
| 4              | 71000       | ARM                 | 1    |
| 5              | 94161       | HANDLE MEC/60/A     | 1    |
| 6              | 91001       | SPINDLE M10 L=105   | 1    |
| 7              | 93002       | PIN §10X56          | 1    |
| 8              | 95420       | CIRCLIP RING §8     | 1    |
| 9              | 95017       | SCREW TE M10X65     | 1    |
| 10             | 97030       | WASHER M10 GROWER   | 2    |
| 11             | 95207       | BLIND NUT M10       | 2    |
| 12             | 95012       | SCREW TE M10X30     | 1    |
| 13             | 97307       | BLU CAP             | 1    |

| NEW GASKET  |          |                |              |
|-------------|----------|----------------|--------------|
| Article No. | Material | COLOR          | Temperature  |
| 96020       | NBR      | WHITE RAL 9016 | -15° / 90°C  |
| 96021       | EPDM     | GREY RAL7040   | -30° / 100°C |
| 96025       | SILICON  | CLEAR WHITE    | -40° / 200°C |
| 96026       | FKM      | BLACK RAL 9017 | -17° / 220°C |



| OLD GASKET  |          |                |              |
|-------------|----------|----------------|--------------|
| Article No. | Material | COLOR          | Temperature  |
| 96020-04B   | NBR      | WHITE RAL 9016 | -15° / 90°C  |
| 96021-04E   | EPDM     | GREY RAL7040   | -30° / 100°C |
| 96025-04S   | SILICON  | CLEAR WHITE    | -40° / 200°C |
| 96026-04V   | FKM      | BLACK RAL 9017 | -17° / 220°C |

